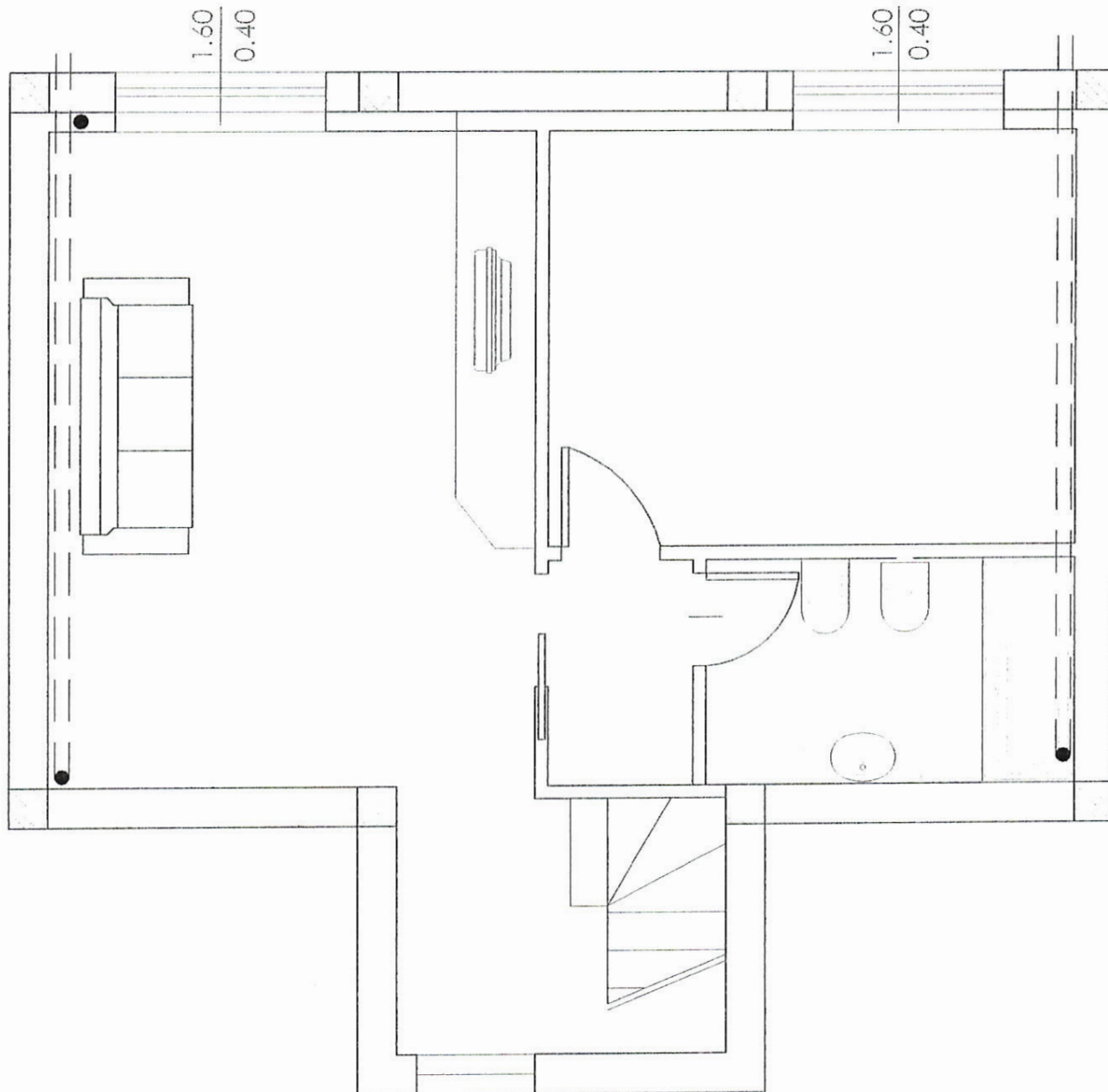


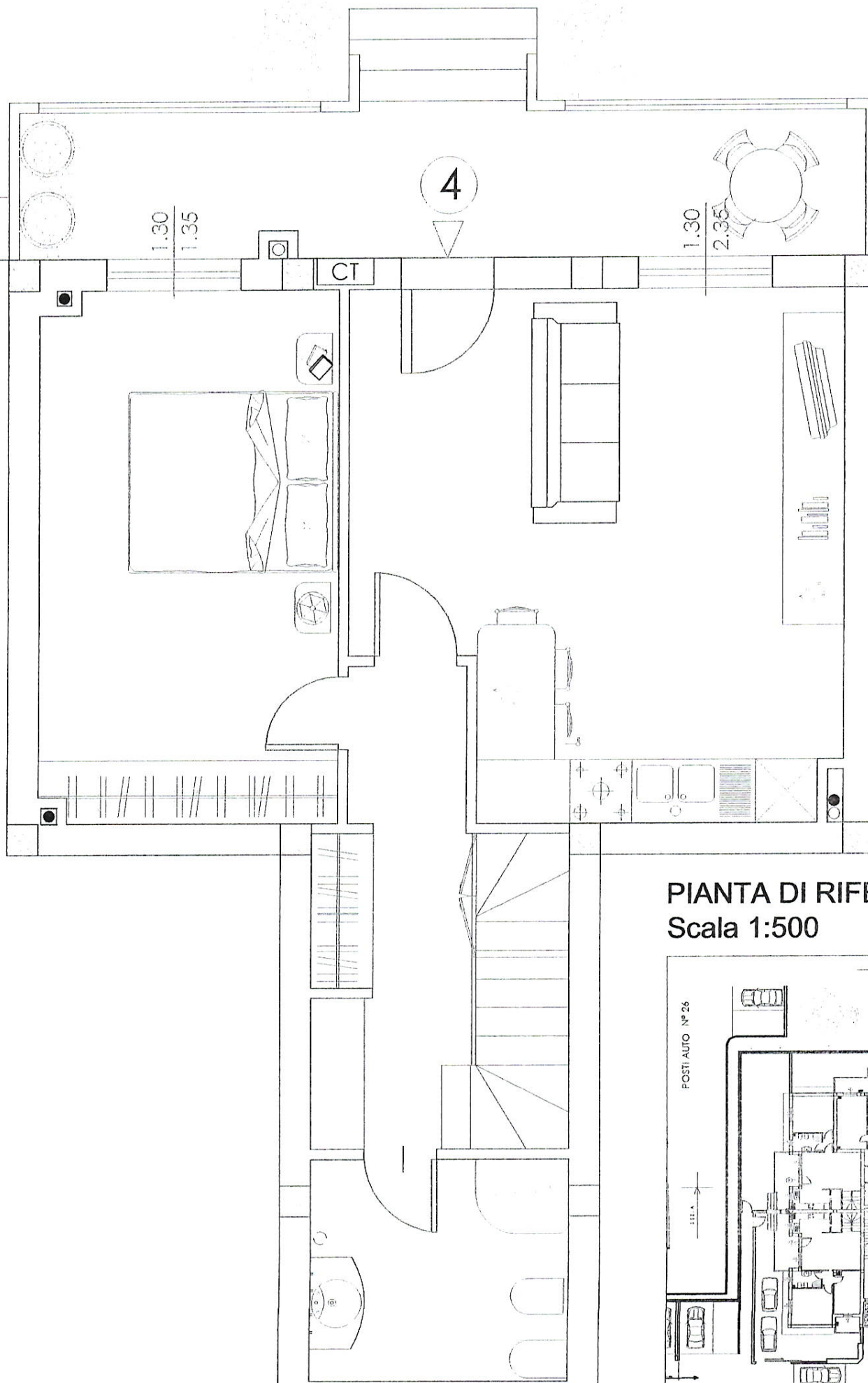
4



FABBRICATO A

PIANO TERRA
Scala 1:50

| | | | |
|----------|----------------|-------------|------------------|
| 4 | PIANO TERRA | | mq 60,50 |
| | VERANDA | mq 13,03/2 | mq 6,51 |
| | SEMINTERRATO | mq 50,97/2 | mq 25,48 |
| | GIARDINO PRIV. | mq 62,65/10 | mq 6,26 |
| | PARTI COMUNI | al 5% | mq 4,94 |
| | TOTALE | | mq 103,70 |



PIANTA DI RIFERIMENTO
Scala 1:500

