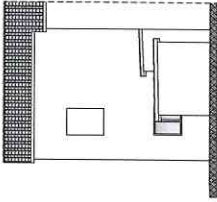
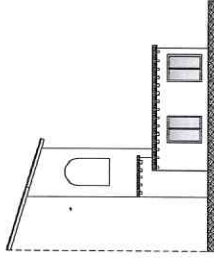


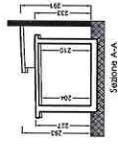
STATO ATTUALE



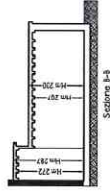
PROSPETTO NORD



PROSPETTO EST



Sezione A-A



Sezione B-B

1-2-3

CALCOLO SUP. COPERTA e VOLUME LORDO

H 2,91

1

H 2,23

2

H 2,27

1 - mc 1,88 x 11m 2,97 = mc 5,39

2 - mc 16,21 x 11m 2,29 = mc 27,28

TOTALE mc 42,67

